

ASD metal matters

klöckner & co multi metal distribution

Autumn 2009 Issue 8



IN THIS ISSUE

Key Person Focus

Industry Meets Art

Economic Challenges

Glass Fittings

DEFRA Approval

1.4003



Stainless Steel Bar Products

Call us with your requirements today

ASD metal services - Durham Tel: 0191 410 5550

ASD metal services - Blackburn Tel: 01254 696969

ASD metal services - Sheffield Tel: 0114 234 1561

ASD metal services - Kidderminster Tel: 01562 733230

ASD metal services - Bridgwater Tel: 01278 784 976

ASD metal services - Tonbridge Tel: 01732 362 000

ASD metal services - Cambridge Tel: 01223 370 170

ASD metal services - Leeds Tel: 0113 272 7240

ASD metal services - Edinburgh Tel: 0131 459 3220

ASD metal services - Grimsby Tel: 01472 354 472

Head Office - Leeds Tel: 0113 254 0711



ASD metal services stock a comprehensive range of long products:

- Round Bar
- Flat Bar
- Angle Bar
- Channel
- Unequal Angles
- Ribbed Round Bar
- Half Round Bar
- Hexagon Bars
- Square Bars
- Special Profile Sections

Available in a full range of grades

A full range of grades are available. In addition we can offer:

- 24 hour delivery
- Sawing
- Improved machinability – saving you time and money when machining your round bars
- A full range of complimentary products

ASD metal services recognise the increasing need for better quality long products with fast and efficient servicing to match.

Our extensive product portfolio is constantly updated to suit your requirements. With our in-house processing facilities, we are sure ASD metal services is the best source for your stainless steel long products.

ASD is well equipped to meet economic challenge

"ASD metal services has a clear approach to the current economic climate – to focus on our strengths and maximise our latent potential," says the company's Chief Executive, Martin Joyce. "Indeed, we are well placed to add value for our customers in these difficult times."

"Over the last few months we have seen a crisis in the banking world and household brands disappear from the High Street," he remarks. "This decline sparked by the credit crunch has spread to other sectors. Many parts of the manufacturing, construction and car making industries are fighting for survival. By the time Metal Matters goes to press there will no doubt be more failures - including some in our own business sector."

"Of course, ASD metal services is not immune from the effects of the current economic uncertainty and we are having to address our cost-base to match current levels of business activity. The best organisations will work harder and smarter to make sure they get a greater share of the shrinking business volumes that are available."

ASD metal services is in a strong position to support its customers and bring further value to their operations.

Key strengths:

- Extended period of infrastructure investment – providing highly efficient warehousing and distribution
- Dedicated and highly skilled commercial teams - focussed on customer service.
- Uniqueness of our offer encompassing a full range of value-added processing.
- Financial strength - to maintain depth and breadth of stock range.
- State-of-the-art SAP computer systems – providing the vital ability to monitor business procedures and performance.
- Part of a large international independent distribution business - Klöckner & Co, one of the Top 100 listed shares in Germany.



Martin Joyce CEO, ASD metal services

"ASD's business model is based on a firm foundation and we are committed to providing the highest standards of supply and service to our customers."

New kit enhances working environment

Latest investments at ASD's Edinburgh unit have seen new Working-At-Height platforms introduced in the loading bays and new racking installed in the warehouse.

"The new platforms - one manual and one fully automated - are in

line with Health & Safety directives and have stepped up efficiency and safety during loading and unloading of articulated trailers," explains Alan Hogg, General Manager, ASD metal services Edinburgh.

Further improvements to the

working environment have been made by the installation of new cantilever racking in the site's annexe warehouse. "The new racking has enabled an increase in stock range on various products and has also boosted stock management and efficiency," Alan concludes.

New signs for new businesses



Following the recent acquisitions of Interpipe, Multitubes and Westok, new ASD metal services' signage has been installed at their respective locations, symbolising the full commercial integration of the businesses into ASD metal services.

Based in Dudley, ASD Interpipe specialises in Hot Formed Hollow

ASD metal services well-known dog logo makes a big impact on new corporate signage at our newest sites.

Sections particularly for the construction sector. ASD Multitubes is located in Brierley Hill and offers a full range of ERW Tube products and processing services, including cutting to length, de-burring, mitre cutting, bespoke batching and packaging to precise requirements, plus an extensive range of complementary products. Operating from premises in Wakefield, ASD Westok manufactures and distributes cellular beams for use in floor and roof construction.

Extra safety in reverse

In a further enhancement to safety, rigid vehicles from ASD metal services' delivery fleet are being fitted with reversing cameras.

"The cameras are fitted to the rear of the vehicles and are activated on selection of reverse gear," says Andrew Sykes, Group Transport Manager. "The system works by

displaying images on the existing fixed satellite navigation screen in the cab giving the driver a clear view of what is happening behind."

To date, 12 vehicles have been fitted with the new reversing cameras and the plan is to roll out the system to the full 90 vehicle rigid fleet as units come up for replacement.

With Castle House the first major scheme to come forward as part of London's Elephant and Castle regeneration master plan, steel fabrication company, Bourne Steel is in at the top.

A customer of ASD metal services Stalbridge, Bourne Steel has been appointed to supply the steel structure that will enclose three wind turbines located in the roof of the 43-storey 148 metre-high Strata tower. This forms part of the new Castle House development which also includes a smaller 5-storey building alongside. When complete, the site will offer 408 residential units and four retail units at ground and first floor levels.

Crowning the top of the tower, the three 9-metre diameter wind turbines will form part of the building's on-site renewable energy contribution. Each turbine fan is located inside a Venturi enclosure formed out of an elliptical-shaped opening made from circular hollow steelwork members and supported by a 17.0-metre high structural steelwork frame. The turbines are expected to provide sufficient power to run the landlord lighting to all common areas.

Due to the complexity and logistics of the curved structure together with the close proximity of the Network Rail viaduct adjacent to the site, a full off-site assembly will be carried out prior to site installations.

ASD metal services Stalbridge is supplying 100 tonnes of structural sections to Bourne

Wind turbines help 'green' inner-city regeneration project

Steel for the project.

At 148-metres, the striking Strata tower will be London's tallest residential building when it is completed in April 2010. The wind turbines are scheduled to be installed in September.

Part of the Bourne Group and based in Poole, Dorset, Bourne Steel was formed in 1946 and is among the top five steel fabrication companies in the UK. In the last decade, the company has designed, manufactured and installed structures for over 380 projects including pre-eminent building such as the Brighton Dome, The Guildhall, London and Wembley Arena. The construction of gas-fired power

stations is a speciality and Bourne Steel was responsible for 14 of the 23 built throughout the 1990s.

Technically-challenging inner-city projects, such as the Elephant and Castle Regeneration in south London are also a key area for Bourne Steel. This major redevelopment programme led by Southwark Council is one of the biggest regeneration projects ever seen in Europe. Covering 70 acres and at a cost of £1.5 billion, the scheme includes creation of a new pedestrianised town centre, market square, green spaces and thousands of new homes and jobs.



Call the expert

Paul Nixon, Product Manager, 1.4003 stainless steel

Paul Nixon was involved at the very start of the introduction of 1.4003 stainless steel to the UK market and is still going.

Paul recently joined ASD metals services as Product Manager to develop and increase market opportunities of 1.4003. With 20 years' experience with this weldable ferritic stainless steel, he's one of the country's leading authorities on the subject.



Paul Nixon

Working between the company's Kidderminster and Blackburn offices, he spends much of his time with customers discussing potential uses for the product and carrying out development work with them.

"1.4003 is a low-cost stainless steel that provides all the benefits of traditional stainless

such as strength, corrosion-resistance, durability and low maintenance plus additional advantages like good weldability and formability," says Paul. "This means it can be fabricated using conventional techniques with very little added cost."

Interestingly, while Paul has spent the majority of his working life involved in the metals business, he holds a degree in palaeontology from the Northern Arizona State University. "I was lucky enough to be able to study for my degree in the United States and then went on to work for the Museum of Northern Arizona," he explains. "After several years, the call of home was too great and I came back to my native Staffordshire."

Back in the UK, he joined Cromwell Steels in Stoke-on-Trent which is where he first encountered 1.4003 and became instrumental in introducing the product to the UK market.

As a result, Paul has a huge library of technical data - combining his own personal knowledge and experience with information relating to technical and practical issues, embracing an enormous range of applications and industries.

"The original markets for 1.4003 tended to be for the coal and sugar industries - in other words, wet and abrasive environments which required high strength and corrosion resistance," he continues. "The product traditionally replaced painted carbon steel or hot-dipped galvanised steel which were used for the manufacture of the handling and processing equipment employed in these industries. The market developed rapidly to include areas such as road, rail, telecommunications and the power generation industry. We are also investigating applications for a variety of other industries such as agriculture, water, electrical and brick sectors."

There is no mistaking Paul's enthusiasm for his job. "I enjoy what I do and, knowing this product inside out, I take great pleasure in passing on its many advantages," he says. To find out if 1.4003 can help you reduce costs, increase competitiveness and, at the same time, improve product and maintain quality,

**Please call Paul on
01562 733 230**

** See more details on 1:4003 page 11*

Every breath you take

A customer of ASD metal services' Organically Coated Steels, Hereford-based GEA Denco has been designing, manufacturing, installing and maintaining air condition systems since the mid 1940s. Today, the company has a turnover of around £40m and employs over 400 people in the UK and overseas.

"We are in the business of creating 'the right kind of air'," explains John O'Leary, Purchasing Manager at GEA Denco. "For equipment, a "cold" environment can lead to condensation and damage functionality. If the environment is too humid, it can lead to short circuits, hardware failure and mould. Tests have shown that machines and their human operators work best and most healthily at temperatures close to 21°C and a relative humidity of 50%."

"We offer several key products including close control, underfloor and comfort air conditioning systems alongside high performance air treatment systems," he adds.

ASD's pre-painted and metallic coated steel specialist, OCS has been supplying GEA Denco for some 10 years. The Kidderminster unit's product range includes Plastisol, polyesters, laminates, Aluzinc, Organitect and electro-zinc.

"We supply Denco with a specialist polyester product that



was designed specifically for their application," says Roy Welch, Sales Manager at OCS. "This is used for the casings in their close control air management system."

In 2000, the management team at GEA Denco led by, Managing Director, Mark Shutler completed a management buy-out of the business from multinational group AMEC plc. In 2005, the company moved to brand-new, purpose-built premises in Hereford. With an established home market, GEA Denco has developed into a truly global

manufacturer with factories in the UK and Turkey supplying specialised air conditioning equipment to major clients across Europe, Asia and the Middle East.

"GEA Denco systems are now deployed across the world in offices, clean rooms, telecommunication centres, retail premises and homes," says John O'Leary. "We are proud to be a leading force in the industry as the benefits of well-engineered air conditioning continue to be realised."

Cor-Ten war memorial pays tribute to lost airmen

A magnificent war memorial made from 2.9 tonnes of Cor-Ten steel supplied by Glen Metals now graces the skyline in Lissett, East Yorkshire. The memorial is on the site of an old aerodrome, once home to 158 Squadron, part of Bomber Command from 1943-45.

The piece was conceived and designed by artist Peter Naylor and built by ASD metal services customer, W Campbell & Son of Hull.

"In the spring of 2008, Novera Energy plc announced a competition to design and build a World War II memorial which is how I got involved," explains Peter Naylor. "Novera were building a 12-turbine wind farm on the site of the old aerodrome and wanted a tribute to the airmen."

"My design came to me very clearly and more or less complete. From the start I had an image of seven men walking towards me as if heading out to their aircraft. I also immediately saw it as a silhouette and so steel plate was the obvious choice."

"Part of the design brief was that the memorial should be vandal-resistant and low maintenance. For these two reasons alone, Cor-Ten seemed a suitable material. I also knew that it would be the best choice because of its weathering characteristics."

"As soon as I walked into W Campbell and Son's factory, I

saw two men busy bending a giant stainless steel fish-tail in an enormous roller press," Peter continues. "They kept bringing it out and looking at it and deciding it needed a bit more curve in this section or that. I realised then that these were the men for the job. How right I was to be!"

Established in 1961, W Campbell & Son is very much a family-run business. The founders, Wally and Vera Campbell are in their eighties but still do a full day's work in the office. Their son, Brian is a director and his daughters, Fiona and Ellie, also work for the firm. Employing 25 people, the company is a market-leader in fabrication.

Over the following few weeks, Peter worked with Brian on the proposed design. "We made some 1:20 laser-cut miniatures of the figures and, at the final interview I think the handing round of these miniatures was a decisive factor in being chosen," Peter explains.

"Work on the full-size artwork

took place over eight months. As we neared the final stages, I drove Brian mad with numerous painstaking alterations to the figures but he was patience personified and it never seemed to matter how much fine-tuning we had to do. One of the most difficult aspects of the job was etching the 851 names of airmen who lost their lives which took weeks of work."

"Having two lasers and a water-jet cutter made the cutting and deep etching of the complex profiling shapes possible," adds Brian Campbell. "We make anything from small brackets to giant sculptures, but working with Peter on this project has given us more pride than any other."

"It was a rare privilege on the unveiling day to watch veterans in their eighties with chests full of medals gently run their fingers across a few carefully picked out names," Peter concludes. "All those involved felt extremely proud."



From Lobster Pots to the London Underground

Some 13 miles from Yeovil and seven miles from Sherborne in Dorset, ASD metal services Stalbridge is one of the company's most rurally-located sites.

"In fact, with a population of 2,660, Stalbridge can claim to be the smallest town in Dorset but our site is one of the biggest in the ASD portfolio and we have seen our business double in size over the last seven years," explains Dave Godden, General Manager. "Our territory extends eastwards to Reading and down to the major conurbations on the south coast from Chichester through Portsmouth, Southampton, Bournemouth, Poole and Weymouth."

A general steels outlet, ASD Stalbridge also has a satellite sales team located in Fareham. Processing facilities at the Stalbridge site include two Kaltenbach saws and a shotblasting and painting operation.

"Shotblasted and painted material represents a large proportion of our sales and we specialise in quick turnaround times, aiming for delivery within 24 hours," says Dave who has been running the Stalbridge operation since 2001 after more than seven years at ASD metal services London.

"Our customers don't fall into



Dave Godden



John Roberts



Ray Adsett



Liz Gavin



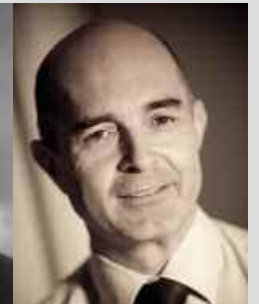
Tracy Smith



Emma Smith



Andy Studden



Chris Allen

any typical categories and can range from big construction engineers, building bridges and office blocks, to small fabricators manufacturing gates and fences. We even have one customer who makes lobster pots."

"We also have a busy cash sales counter catering to local people where they can buy steel cut-to-size."

"Recent big projects for us involved the supply of steel for station upgrades on the London Underground and also the construction of the brand-new Westfield Shopping Centre at White City in London."

Stalbridge employs 30 people with a further 3 at the satellite office Fareham.

Sales Office Manager at Stalbridge is John Roberts who leads a team including Tracy Smith and Ray Adsett. Andy Studden and Margaret Godden specialise in sales of constructional steel. Chris Allen, Emma Smith and Liz Gavin make up the team at Fareham.

"Our business has made major strides in the last few years and we are a strong, committed team of people," Dave Godden concludes.

customer

FOCUS

Over 50% of all new multi-storey car parks built in the UK use ASD Westok's Cellular Beams in the construction of their floors.

One of the latest projects to specify Cellular Beams was a new city centre car park in Milton Keynes.

"Cellular Beams have key advantages for car parks," explains Mike Hawes, Technical Director at ASD Westok.

"Flexibility of depth is the major benefit - the architect and engineer can determine the depth allowed for the steelwork and we design the cellular beam to that exact depth. In addition, the large

Cellular Beams drive ahead in car park construction

web openings on the beams provide a light and airy interior to improve personal security – something increasingly in demand for modern parking areas. These web openings also accelerate smoke dispersal compared to solid-web beams and can avoid the need to use a forced ventilation system."

ASD Westok can also pre-camber Cellular Beams at no extra cost during production. This minimises the beam's deflection (sag) and also allows natural drainage of surface water.

"Cellular Beams are extremely economical at longer spans.

"The majority of car parks in the UK utilise a 16m span but the longest span we have supplied for a UK car park to date is 28m" comments Mike.

ASD Westok is supplying Cellular Beams for some 12-15 car parks a year. Among the other car parks in the UK utilising ASD Westok Cellular Beams are the St Andrews Car Park in Norwich (which won the 2006 Best New Car Park in the British Car Park Awards).

A development project using Cellular Beams supplied by ASD Westok has been hailed as among the country's greenest buildings.

The two steel-framed structures making up Vulcan House, the new home for the UK Border Agency (UKBA) in Sheffield, have achieved BREEAM 'Excellent' ratings. BREEAM is the world's longest-standing and most widely used environmental assessment method for buildings and sets the standard for sustainable development.

ASD Westok invented and pioneered steel Cellular Beams in the late eighties, mainly for use in floor construction. Featuring a series of openings (cells) along the beam web, the design creates an extremely efficient structural member that is strong yet lightweight at the long spans required in modern high-spec buildings.

"In the last 20 years, Cellular

Cellular Beams specified for top-rated green building

Beams have revolutionised the construction of offices, enabling architects and engineers to design 'clear span', column-free spaces at an acceptable cost," says Andy Holmes, Managing Director, ASD Westok. "Cellular Beams are economical in themselves, but also allow Mechanical and Electrical (M&E) services to pass through the web openings enabling floors to have a shallower profile. Vulcan House is a prime example. The engineer considered short-span construction but found that by using Cellular Beams, he could provide column-free office space at virtually the same overall cost."

UKBA is part of the Home Office government department and is responsible for securing

UK borders and controlling migration to the UK.

A major challenge for the project was to meet the government's environmental target of carbon neutrality ahead of the 2012 target. The UKBA aims to minimise its ecological footprint, measuring CO2 emissions through construction, operation and eventually demolition of the building which is set to become a benchmark for future Government construction projects.

The Cellular Beams were supplied by ASD Westok to the project steelwork contractor, Robinson Construction Ltd, Derby. The beams carried a 150mm-thick composite concrete/profiled metal deck.

Staff benefit from expert knowledge

In-depth product knowledge courses have been on the agenda for sales, purchasing and production staff from ASD metal services' Flat Products Division.

Delivered by Alex Cunningham, Operations and Quality Manager at ASD metal services Bathgate,

the company's top metallurgy expert, the courses covered the entire process of steel production - from mining the ore to iron making, steelmaking, casting and rolling.

As a metallurgy graduate with nearly 40 years' experience in the steel industry including 15 years at British Steel's Ravenscraig

works, Alex is delighted to pass on his knowledge and expertise to the next generation.

"The courses provide a forum for lively and stimulating discussion about the whole steel production process and all help towards keeping employees well informed and giving ASD a competitive edge," says Alex.

Work is well underway for the ten members of the ASD metal services Flat Products Academy. They now have four sessions, plus the testing Outward Bound course, under their belts as part of their study for an NVQ Level 4 in Management.

"All the course work relates clearly to the candidates' work applications," adds Barrie. "The Academy is a key team building opportunity enabling interactive support groups, the cross-fertilisation of ideas and the development of new, practical tools for members to hone their management skills."

Academy members get to work

The Academy has been established to identify and provide structured training for the development of the Division's managers of the future.

"To date, the candidates have attended courses covering leadership/management, operational planning, communication and conflict management," comments Barrie Salter, Director, ASD metal services Flat Products Division. "The Outward Bound Challenge took place over two days at Eskdale, Cumbria in October."

The programme also includes a two-day assessment centre, a work-related project and a series of sessions with an NVQ training partner and the Divisional Director.



Left to right: Mark Irwin - Belfast, Eric Hill - OCS, Mark Adams - Durham, Nathan Anthony - Stoke, Clare Blight - Stoke, Joe Newman - Stoke, Paul Evans - Tividale, Gordon Cameron - Bathgate, Roy Welch - OCS, Darryl Macready - Tividale

customer

FOCUS

Industry meets art

While the mainstay of its operation is the manufacture of railings, fencing and gates, Rowley Engineering has also developed a strong reputation for specialist one-off features made from metal.

Based in Stafford and a customer of ASD metal services Biddulph, Rowley has been involved in a number of artistic projects. Recent jobs include a designer shelter made from COR-TEN and a 4m high stainless steel dandelion – both in Wolverhampton.

"We've been dealing with the Biddulph site for over 25 years," says Martin Watton, Company Director, Rowley Engineering. "We buy a wide range of material - from steel sections to specialist metal like COR-TEN. We are very pleased with the service and delivery they provide."

Rowley is a real combination of traditional and modern. "We're very proud of the fact that we are true metal bashers in the old-fashioned sense but we combine our artisan metalworking skills and craft with the latest computer design aids and laser cutting technology," adds Martin.

Founded in 1954 and employing 25 people, the company's bread and butter business comes from the design and manufacture of specialist fencing covering a wide range of applications - from high security prisons, inner-city redevelopment, schools and airfields.

"The public artwork side of our

operations has been growing steadily over the years," continues Martin. "Our engineers and designers work closely with the artists and sculptors to turn their ideas and sketches into reality. The artworks are developed, fabricated and constructed in our workshops and we also assist with on-site installation.

One project at James Watt School in Handsworth, Birmingham combined both the fencing and artwork side of Rowley's expertise with a new set of highly-decorative school railings and entrance gate (see picture).

The largest art structure in which Rowley has been involved is the Sentinel Spitfire Sculpture in Castle Vale, Birmingham. Standing 16m high, it features three half-size Spitfires peeling off in three directions. The sculpture was unveiled in 2001 and in that year, Rowley was presented with the Midland Association of the Institute of Civil Engineering Project Award. "At a time when much of mass manufacturing has moved overseas, we've carved out a niche market for ourselves, providing extra services to our customers such as bespoke design and site survey packages that have ensured our continuing success," concludes Martin Watton.

"Rowley is a long-standing customer and we have built a strong working relationship with the company over the years," adds Lee Turtle, General Manager, ASD metal services Biddulph.



The James Watt school railings combined both of Rowley Engineering's areas of expertise.



Fencing, gates and railings form the bedrock of Rowley's business.



Made from COR-TEN, a Wolverhampton park's designer shelter.



Rowley played a key part in the creation of the Miners' Memorial designed by well-known metal sculpture artist Tim Tolkien and which graces the Pro Logis trading estate in Coventry.

Team helped to first base in Italy



Members of the GB baseball team appropriately sport ASD baseball caps.

Sponsorship from ASD metal services London helped a Great Britain team of young baseball players make a trip to the 2008 European Juvenile Baseball Championships in Siena, Italy.

Among the 10-12 year-old members of the squad is Ben Chambers, son of Andy Chambers who works for NB Structures, one of ASD metal services London's key customers.

"We were thrilled that ASD was able to contribute to the funding of the trip - it was a great

experience for the youngsters," says Andy. "The GB team came a creditable 8th place in the tournament and won a special prize for being the best team as voted by the other countries. Individual players also won prizes as the tournament's best fielder and the most stolen bases gained."

The team beat Poland and lost narrowly to France, Italy South, Italy North and Slovakia in other matches. Of the 19 players in the squad, 14 play for Horsham Junior Baseball Club in West Sussex, the Chambers' home club.

Hallowe'en abseil raises cash

ASD's Alex Knight and Vicki Jones from Organically Coated Steels in Kidderminster joined 700 hardy folk to support the Stroke Association's weekend abseil at Dudley Zoo and Castle last Hallowe'en.

Despite the awful weather that weekend, Alex and Vicki, both from Internal Sales at OCS, successfully made the descent

from the Dudley Castle turret - in fancy dress. Alex donned makeup and fake blood as a Zombie and Vicki went as Bat Girl, and between them, the intrepid duo raised £360 for the Stroke Association.

"It was great fun but fairly scary looking down from the very edge of the turret whilst they attached your harness," Alex remarks.

What is 1.4003?

It is a weldable ferritic utility stainless steel.

It provides the benefits of traditional stainless steel, such as strength, corrosion resistance, durability and low maintenance, but it also has additional benefits such as good weldability and formability, making it suitable for fabrication using conventional techniques.

Cost benefit ●

Specifications ●

Strength ●

Weldability ●

Corrosion & Abrasion ●

Coatings ●

For more details contact your nearest sales office
www.asdmetalservices.com

New frameless glass systems - the chemistry of stainless steel and glass

The new range of ASD Frameless Glass on offer from ASD Architectural helps create the sleek ultra-modern look of seamless glazing now specified in many retail applications, major offices and showroom constructions.

The range falls into four main product areas – spider glazing, glass canopies, frameless glass doors and glass balustrades. For spider glazing – where large pieces of glass are being employed - ASD Architectural supplies spider brackets which are fixed back to architectural steel beams or elliptical tubes. A broad range of stainless steel glass bolts is available for the construction of glass canopies. For frameless glass doors, there

is a choice of patch fittings and armour-plated rails as well as niche applications such as pivoting-bar glass doors or panic bars for glass doors. Completing the product line-up is ASD Elegance - a glass balustrade and handrail system which includes features such as structural glass panels and a unique handrail that incorporates multi-coloured LED lights.

"These systems are in line with our core steel and stainless steel glazed systems which anchor ASD Architectural as a professional, specialist glazing solutions provider to the UK architecture market," says Jean Pierre Lajarige, General Manager ASD Architectural. As well as the supply of fittings,

full technical back-up is also available from the ASD Architectural technical support team.

"They are on hand to advise on specifications and applications," adds Jean Pierre. "The team can be fully involved in a project and supply CAD drawings and test certificates. We are here to guide customers and welcome the chance to discuss any project."

* For the full glazing system range, please request the new 'Inspiring' brochure from: ASD Architectural Innovative framing systems in metal and glass
Tel: 0114 234 5288
www.asdarchitectural.com

Approval gained for use of stainless steel tubes

ASD metal services' stainless steel tube and pipe products are now approved for use in public water supplies.

"Approved under regulation 31 of the Water Supply (Water Quality) Regulations 2000, this latest move represents a further step forward in the successful development of this range," says Adam Eccles, Product Manager.

ASD metal services has not only demonstrated sound internal quality systems but has also provided evidence of quality tube products provided by an exceptional supply chain.

"Our customers' needs are not

necessarily about cost," comments Adam. "Quality of service and product reliability are key factors in purchasing material, particularly in the utilities sector."

"This is only one of a series of steps we are taking in the continual development of stainless steel tube and pipe products. Major opportunities are now opening to us. With the combination of our massive stock profile backed by sound supplier partnerships, our customers are beginning to see the benefits in package supply by ASD."

Some of the latest new products

include slotted hand rail tubes, ASD Elegance hand rail solutions, Welded Pipe, Hygienic Tubes and a range of fittings for tube and pipes.

Further investment is now being made in additional products, among them a wider range of sizes for Ornamental & Structural Tubes, new grades including 1.4003, 316 and Duplex, Metric Tubes and Fittings, and Seamless tubes and pipes.

"There are still new sectors yet to be serviced and we can see positive opportunities in the expansion of our range," Adam remarks. "As our customer base grows, so will our stock range."

Effective property protection

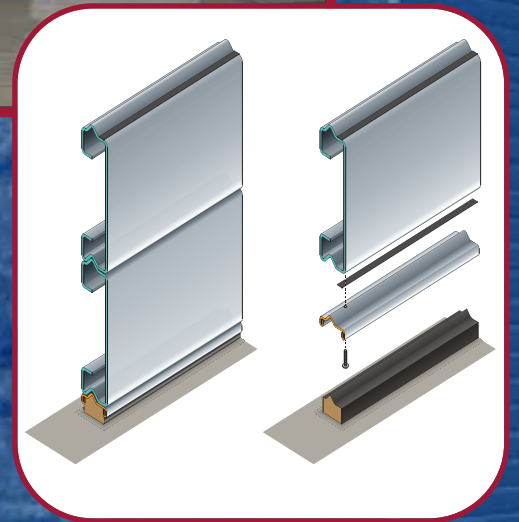
The patented ASD Waterstop Flood Protection system gives you the ability to protect residential and commercial property from floodwater.



The system consists of solid steel slats combined with specially developed gaskets, all of which have been tested and proven.

Based on a modular design, Waterstop is quick to install, easy to service and can be sealed against timber, stone, brick and steel openings.

With numerous applications and testimonials throughout Europe we are now able to offer this system exclusively throughout the UK.



A secure shield against flooding

For more information please contact:

ASD Architectural

901 Herries Road, Hillsborough, Sheffield S6 1QH

Tel: 0114 234 5287/88 Fax: 0114 234 1643

Email: rp@asdmetservices.co.uk

MULTITRIM

ASD metal services

klöckner & co multi metal distribution

Aluminium Sign System

Fast to fabricate, easy to install and cost effective - the combination that has made Multitrim one of the World's most popular aluminium extrusions for non-illuminated panel signs.



Panels can be entered from the front, making Multitrim ideal for awkward installations such as under canopies, between pillars and next to other signs. Multitrim may be fixed directly to most reasonably flat surfaces without structural supports. Panels are held in place by a simple, acrylic hanging bar and in multi-panel applications panel sections are joined together with Panelocks.

Multitrim has been tested and approved by several of the World's leading manufacturers of acrylic sheet. The safety and effectiveness of the system have been proved over many years of use.

Multitrim profiles are available in anodised or powdercoat finish, in a choice of colours and are ideal for both interior and exterior use.

Specification

- Aluminium Non-Illuminated Sign System
- Accepts Acrylic, Foamex or other types of panel material from 3mm - 5mm
- White & silver anodised as standard or powder coated to RAL/BS Colours
- Length sizes from 305mm - 15m
- Height sizes from 305mm - 1220mm

For more information please contact:

ASD Sign Products

ASD metal services, Arthur Drive, Hoo Farm Industrial Estate, Kidderminster DY11 7RA
Tel: 01562 733 230 Fax: 01562 733 214
email: signs@asdmetservices.co.uk

